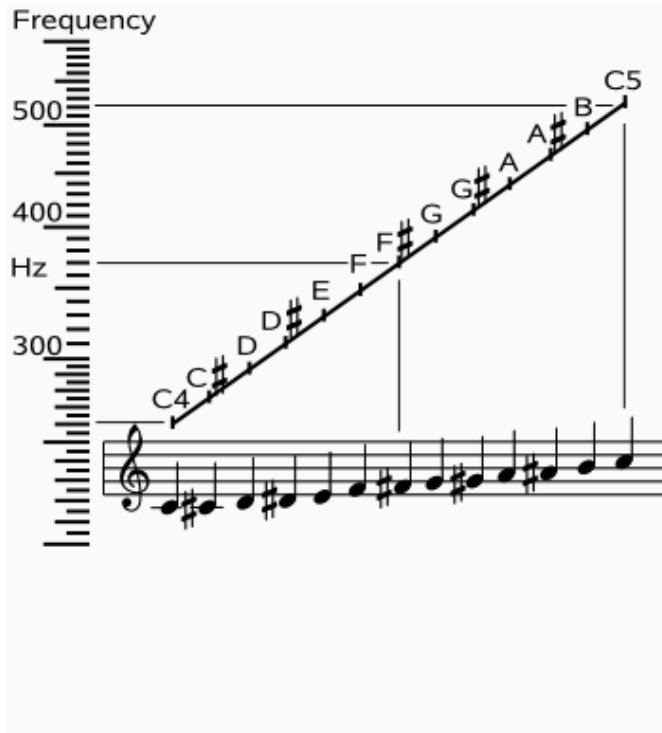




## Wavelets (Winter 08/09)



Frequency on a logarithmic scale vs. Position on Treble Clef.

Each note shown has a frequency of the previous note multiplied by  $\sqrt[12]{2}$ .

(Taken from [http://en.wikipedia.org/wiki/Image:Frequency\\_vs\\_name.svg](http://en.wikipedia.org/wiki/Image:Frequency_vs_name.svg))